

imageRUNNER ADVANCE C3500 II series

COMPACT COLOUR A3 MULTIFUNCTIONAL WITH POWERFUL END-TO-END DOCUMENT CAPABILITIES



QUICK FACTS

- **Format:** Colour A3
- **Maximum number of Paper Cassettes:** 4
- **Paper input Capacity:** 2,300 sheets
- **Finishing Capabilities:** Collate, Group, Offset, Staple, Booklet, Hole Punch, Staple-Free Staple, Staple on Demand
- **ADF Capacity:** 150 sheets
- **ADF Type:** Platen and DADF or Platen and RADF

- **A4 Colour Print Speed Range:** 20 - 30ppm
- **Scan Speed:** 80ipm

- **Print Languages:** UFR II, PCL6, Adobe PostScript 3
- **Print Resolution:** 1,200 x 1,200

- Suitable for workgroups in a floor standing environment
- V² (Vivid & Vibrant) imaging technology ensures documents impress time after time and stand out from the rest
- Class leading Typical Electricity Consumption (TEC) ratings
- Consumes as little as 0.8W in sleep mode
- Qualifies for the latest stringent Blue Angel certification
- Fusing technologies, pQ toner, and innovative sleep mode features help lower overall energy consumption.
- Users can create professional-looking booklets and finished documents automatically.
- Save on transmission costs by utilising the Fax over IP option*
- Optional Cassette Lock to protect your investment
- Options for cost recovery and coin vending integration.

UNIFIED FIRMWARE PLATFORM

Common Firmware and features that apply to all imageRUNNER ADVANCE Generation 3 2nd Edition models

SECURITY:

- Prevent unauthorised distribution of sensitive information with our most secure imageRUNNER ADVANCE ever through an array of standard and optional document security features
- Choose from device based or Cloud based authentication without the need for an additional server
- Ability to disable functions by user to prevent unauthorised usage
- Secure Print and Mailbox enhance document confidentiality
- Ensure information privacy and security across your network with IPsec, port filtering capabilities, and SSL technology
- Mitigate the risk associated with the governance of sensitive information and data privacy (PII data) with the Industry-first Data Loss Prevention and auditing of prints, copies, scans and faxes through uniFLOW

PRODUCTIVITY:

- Advanced personalisation enables a unique, personal experience tailored to meet each user's workflow needs.
- Intuitive user interface with a large, responsive colour touchscreen with smart phone-like usability
- Motion sensor technology wakes device from sleep mode.
- Convenient Staple-on-demand functionality.
- Automatically remove blank pages when scanning.
- Scan and convert documents to Searchable PDF, Microsoft® Word, and Microsoft® PowerPoint
- Effortless capturing of paper-based documents with rapid single pass scanning (DADF) and smart media handling capabilities such as multi-sheet feed detection, help speed up the process of digitising documents.
- Secure mobile printing as standard
- Enable guest printing with Direct Connection
- Substitute your PC for your smart device to complete your day-to-day workflows
- Support for industry standards such as Apple Airprint® and Mopria®

Canon

imageRUNNER ADVANCE C3500 II series

INTEGRATION:

- Tight integration with uniFLOW Online Express, a Cloud based output management system
- uniFLOW Online Express provides extensive tracking and reporting capabilities from a central web based system.
- Collaborates with business applications and external systems in the cloud
- Canon's MEAP platform provides process optimisation, by integrating with a range of powerful document, capture and output management solutions such as uniFLOW
- Canon's device management tools give you a centralised point of control across your entire fleet, upgrade devices, check device status and consumables, turn off devices remotely, capture meter readings, as well as manage address books and printer drivers
- Supports industry and network standards i.e. PCL and Adobe PostScript for seamless integration

COST MANAGEMENT:

- Technology designed to reduce total cost of print
- User activity tracking provides visibility of print behaviour
- Apply policies and restrict usage at function level by user*

- Remote diagnostics and assistance, help reduce costs by minimising downtime and time spent by IT resolving issues
- Remote and centralised fleet management simplifies IT management of devices and fleets

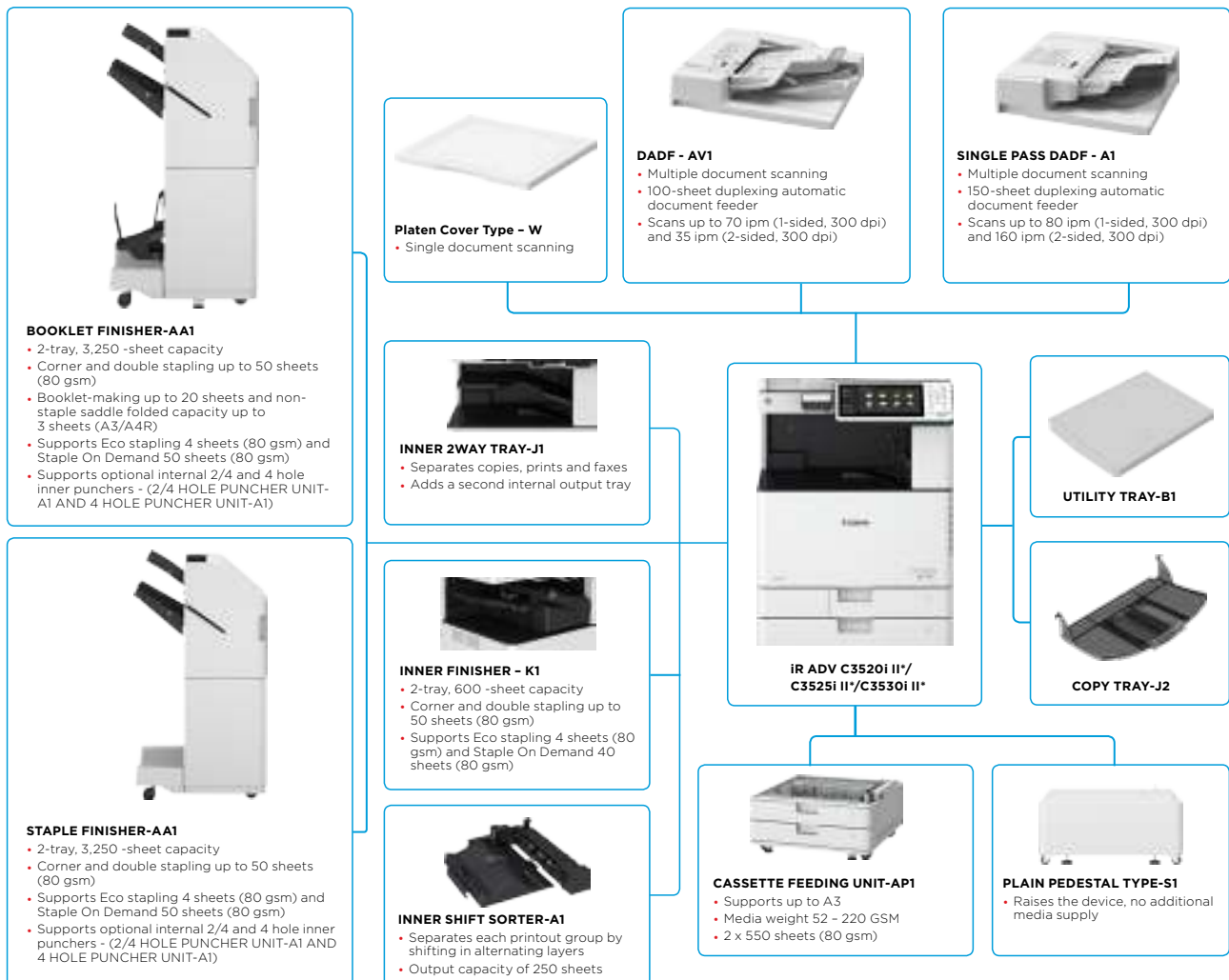
QUALITY AND RELIABILITY:

- Designed to achieve maximum uptime with intuitive user maintenance videos and status notifications, to help keep supplies replenished.
- Canon's signature reliability and engine technologies provide high quality output to meet the needs of busy departments.
- Quiet finishing provides less interruptions to workers, keeping employees productive

SUSTAINABILITY:

- Incorporates sustainable design and a focus on minimising environmental impact
- ENERGY STAR® qualified
- Minimise waste with default 2-sided printing, secure printing, and the ability to hold print jobs, preview them and change print settings at the device, achieving the desired results at the first time of printing

Main configuration options



This flat configuration is for illustration purpose only. For a complete list of options and the exact compatibility relationships, please refer to the online product configurator.

II* indicates that this model has been upgraded to new system software and includes additional security features as standard.

TECHNICAL SPECIFICATIONS

imageRUNNER ADVANCE C3500 II series

MAIN UNIT

Machine type

Core functions

Processor Speed

Control Panel

Memory Standard

Hard Disk drive

Interface Connection

Colour Laser Multifunctional
Print, Copy, Scan, Send, Store and Optional Fax
Canon Dual Custom Processor (Shared) 1.75 Ghz
25.6 cm (10.1 inch) TFT LCD WSVGA Colour Touch panel
Standard: 3.0GB RAM
Standard: 250GB Maximum: 1TB
NETWORK
Standard: 1000Base-T/100Base-TX/10Base-T,
Wireless LAN(IEEE 802.11 b/g/n)
Optional: NFC, Bluetooth Low Energy

OTHERS
Standard: USB 2.0 (Host) x1, USB 3.0 (Host) x1, USB 2.0 (Device) x1
Optional: Serial Interface, Copy Control Interface

Paper input (Standard)

2 x 550-sheet cassettes (80gsm)
100-sheet multi-purpose tray (80gsm)

Paper input (Option)

2x 550-sheet cassettes (80 gsm)
(CASSETTE FEEDING UNIT-API)

Maximum paper input capacity

2,300 sheets (80 gsm)

Paper output capacity

Without Finisher: 250 sheets (A4, 80gsm)
With Copy Tray: 100 sheets (A4, 80 gsm)
With Inner Finisher: Max. 600 sheets (A4, 80 gsm)
With External Finisher: Max. 3,250 sheets (A4, 80gsm)

Finishing capabilities

Collate, Group
With Inner Shift Sorter: Collate, Group, Offset
With Inner Finisher: Collate, Group, Offset, Staple,
Staple-Free Staple, Staple on Demand
With External Finisher: Collate, Group, Offset, Staple,
Booklet¹, Hole Punch², Staple-Free Staple, Staple on Demand

Supported media types

Cassettes 1/2:
Thin paper, Plain paper, Thick paper, Colour paper, Recycled paper, Pre-punched paper, Transparency, Bond paper, Envelope
Multi-purpose tray:
Thin paper, Plain paper, Thick paper, Colour paper, Recycled paper, Pre-punched paper, Transparency, Tracing paper, Label, Bond paper, Coated paper, Envelope
Cassettes 3/4 (CASSETTE FEEDING UNIT-API):
Thin paper, Plain paper, Thick paper, colour paper, Recycled paper, Pre-punched paper, Transparency, Bond paper

Supported media sizes

Cassette 1:
Standard size: A4, B5, A5R
Envelopes: No.10 (COM10), ISO-C5, DL
Custom Size: 139.7 mm x 182 mm to 297 mm x 215.9 mm
Cassette 2:
Standard size: A3, B4, A4, A4R, B5, A5R
Envelopes: No.10 (COM10), Monarch, DL
Custom Size: 139.7 mm x 182 mm to 304.8 mm x 457.2 mm
Multi-purpose tray:
Standard size: A3, B4, A4, A4R, B5, B5R, A5, A5R, SRA3
Custom size: 98.4 mm x 139.7 mm to 320 mm x 457.2 mm
Free size: 98.4 mm x 139.7 mm to 320 mm x 457.2 mm
Envelopes: No.10 (COM10), Monarch, ISO-C5, DL
Envelope custom size: 98 mm x 98 mm to 320 mm x 457.2 mm

Supported media weights

CASSETTE FEEDING UNIT-API:
A3, B4, A4, A4R, B5, B5R, A5R, Custom Size: 139.7 mm x 182 mm to 304.8 mm x 457.2 mm
Cassettes 1/2: 52 to 220 gsm
Multi-purpose tray: 52 to 300 gsm
Duplex: 52 to 220 gsm
Cassette Feeding Unit-API: 52 to 220 gsm

Warm-up Time

From Power On: 34 Seconds or Less³
From Sleep Mode: 10 Seconds or Less
Quick Start-up Mode: 10 seconds or less³

Dimensions (W x D x H)

Platen model: 565 mm x 707 mm x 777 mm
RADF model: 565 mm x 736 mm x 880 mm
DADF model: 565 mm x 742 mm x 900 mm

Installation Space (W x D)

978 mm x 1,088 mm
(Basic: Platen cover + Multi-purpose tray extension extended)
978 mm x 1,117 mm
(Basic: RADF + Multi-purpose tray extension extended)
978 mm x 1,123 mm
(Basic: DADF + Multi-purpose tray extension extended)
1,620 mm x 1,088 mm
(Fully configured: Platen cover + BOOKLET FINISHER-AA1 + Multi-purpose tray extension extended)
1,620 mm x 1,117 mm
(Fully configured: RADF + BOOKLET FINISHER-AA1 + Multi-purpose tray extension extended)
1,620 mm x 1,123 mm
(Fully configured: DADF + BOOKLET FINISHER-AA1 + Multi-purpose tray extension extended)

Weight

Platen model: Approx. 69.9 kg including toner
RADF model: Approx. 76.2 kg including toner
DADF model: Approx. 81.5 kg including toner

PRINT SPECIFICATIONS

Printing method

Print Speed

Print Resolution

Page description languages

Double Sided Printing

Direct Print

Printing from mobile and cloud

Fonts

Operating System

Colour Laser Beam Printing

iR ADV C3520I II*:

20 ppm (A4), 15 ppm (A3), 20 ppm (A4R), 20 ppm (A5R)

iR ADV C3525I II*:

25 ppm (A4), 15 ppm (A3), 20 ppm (A4R), 25 ppm (A5R)

iR ADV C3530I II*:

30 ppm (A4), 15 ppm (A3), 20 ppm (A4R), 30 ppm (A5R)

600dpi x 600dpi, 1200dpi x 1200dpi

UFR II, PCL 6, Genuine Adobe PostScript Level 3 (Standard)

Automatic (Standard)

Direct printing available from USB memory key, Advanced space, Remote UI and Web Browser⁴

Supported file types: TIFF, JPEG, PDF, EPS, and XPS.

A range of software and MEAP-based solutions is available to provide printing from mobile devices or internet-connected devices and cloud-based services depending on your requirements. Please contact your sales representative for further information

PCL fonts: 93 Roman, 10 Bitmap fonts, 2 OCR fonts, Andalé Mono WT J/K/S/T* (Japanese, Korean, Simplified and Traditional Chinese), Barcode fonts**
PS fonts: 136 Roman

*Requires optional PCL INTERNATIONAL FONT SET-A1

**Requires optional BARCODE PRINTING KIT-D1

UFR II: Windows Vista/Server 2008/7/Server 2008 R2/Server 2012/8.1/Server 2012 R2/10/Server 2016, MAC OS X (10.7 or later)

PCL: Windows Vista/Server 2008/7/Server 2008 R2/Server 2012/8.1/Server 2012 R2/10/Server 2016

PS: Windows Vista/Server 2008/7/Server 2008 R2/Server 2012/8.1/Server 2012 R2/10/Server 2016, MAC OS X (10.7 or later)

PPD: Windows Vista/7/8.1/10, MAC OS X (10.3.9 or later)

SAP Device Types are available via the SAP Market Place.

Please refer to <http://software.canon-europe.com/> for availability of print solutions for other operating systems and environments including AS/400, UNIX, Linux and Citrix. Some of these solutions are chargeable.

COPY SPECIFICATIONS

Copy Speed

iR ADV C3520I II*:

20 ppm (A4), 15 ppm (A3), 20 ppm (A4R), 20 ppm (A5R)

iR ADV C3525I II*:

25 ppm (A4), 15 ppm (A3), 20 ppm (A4R), 25 ppm (A5R)

iR ADV C3530I II*:

30 ppm (A4), 15 ppm (A3), 20 ppm (A4R), 30 ppm (A5R)

Approx. 5.9/8.2 seconds or less

Reading: 600 dpi x 600 dpi

Printing: Up to 2,400dpi equivalent x 600dpi

Up to 999 copies

25% - 400% (1% Increments)

25%, 50%, 71%, 100%

141%, 200%, 400%

First-Copy-Out Time

Copy resolution

Multiple Copies

Magnification

Preset Reductions

Preset Enlargements

SCAN SPECIFICATIONS

Standard type

Standard: Reader

Optional: Colour Platen or Duplexing Automatic document feeder (RADF) or Single-pass Duplexing Automatic Document Feeder (DADF)

Pull Scan Spec

Colour Network ScanGear2. For both TWAIN and WIA
Supported OS: Windows Vista/7/8.1/10/Server 2008/2008 R2/2012/2012 R2/2016

Scan Resolution

100 x 100 dpi, 150 x 150 dpi, 200 x 100 dpi, 200 x 200 dpi, 200 x 400 dpi, 300 x 300 dpi, 400 x 400 dpi, 600 x 600 dpi

Acceptable Originals

Platen media size: Sheet, Book, 3-Dimensional Objects (Up to 2kg)

Platen: A3, B4, A4, A4R, B5, B5R, A5, A5R, B6R

Document Feeder media size:

RADF model: A3, B4, A4, A4R, B5, B5R, A5, A5R, B6

DADF model: A3, B4, A4, A4R, B5, B5R, A5, A5R, B6R

Document Feeder media weight :

RADF model:

1-sided scanning: 38 to 128 gsm/64 to 128 gsm (BW/CL)

2-sided scanning: 50 to 128 gsm/64 to 128 gsm (BW/CL)

DADF model:

1-sided scanning: 38 to 157 gsm/64 to 157 gsm (BW/CL)

2-sided scanning: 50 to 157 gsm/64 to 157 gsm (BW/CL)

Scan Method

Send functionality available on all models

Scan to USB Memory Key: Available on all models

Scan to Mobiles or internet-connected devices:

A range of solutions is available to provide scanning to mobile devices or internet-connected devices depending on your requirements. Please contact your sales representative for further information

Scan to cloud-based services: A range of solutions is available to provide scanning to cloud-based services depending on your requirements. Please contact your sales representative for further information.

TWAIN/WIA Pull scanning available on all models

TECHNICAL SPECIFICATIONS

imageRUNNER ADVANCE C3500 II series

Scan Speed (BW/CL; A4)

RADF model:
Single-sided Scanning (BW): 70 ipm (300pi) / 51 ipm (600 dpi)
Single-sided Scanning (Colour): 70 ipm (300pi) / 51 ipm (600 dpi)
Double-sided Scanning (BW): 35 ipm (300pi) / 25.5 ipm (600 dpi)
Double-sided Scanning (Colour): 35 ipm (300pi) / 25.5 ipm (600 dpi)
DADF model:
Single-sided Scanning (BW): 80 ipm (300pi) / 51 ipm (600 dpi)
Single-sided Scanning (Colour): 80 ipm (300pi) / 51 ipm (600 dpi)
Double-sided Scanning (BW): 160 ipm (300pi) / 51 ipm (600 dpi)
Double-sided Scanning (Colour): 160 ipm (300pi) / 51 ipm (600 dpi)

Paper Capacity

RADF model: 100 Sheets (80 gsm)
DADF model: 150 Sheets (80 gsm)
2-sided to 2-sided (Automatic)

Double sided scanning

SEND SPECIFICATIONS

Optional / Standard

Standard on all models

Destination

E-mail/Internet FAX (SMTP), SMB, FTP, WebDAV, Mail Box, Super G3 FAX(Optional), IP Fax(Optional)

Address Book/speed dials

LDAP (2,000)/Local (1,600)/Speed dial (200)

Send resolution

100 x 100 dpi, 150 x 150 dpi, 200 x 100 dpi, 200 x 200 dpi, 200 x 400 dpi, 300 x 300 dpi, 400 x 400 dpi, 600 x 600 dpi

Communication protocol

File: FTP, SMB v3.0, WebDAV
E-mail/I-Fax: SMTP, POP3, I-Fax (Simple, Full)

File Format

Standard: TIFF, JPEG, PDF(Compact, Searchable, Apply policy, Optimize for Web, PDF A/1-b, Encrypted), XPS(Compact, Searchable), Office Open XML (PowerPoint, Word), PDF/XPS(Digital Signature)
Optional: PDF(Trace & Smooth)

FAX SPECIFICATIONS

Optional / Standard

Optional on all models

Modem Speed

Super G3: 33.6 kbps
G3: 14.4 kbps

Compression Method

MH, MR, MMR, JBIG

Resolution

400 x 400 dpi, 200 x 400 dpi, 200 x 200 dpi, 200 x 100 dpi

Sending/Recording Size

A5* and A5R* to A3
*Sent as A4

FAX memory

Up to 30,000 pages

Speed dials

Max. 200

Group dials/destinations

Max. 199 dials

Sequential broadcast

Max. 256 addresses

Memory backup

Yes

SECURITY SPECIFICATIONS

Authentication

Standard: Universal Login Manager (Device and Function Level Log-in), uniFLOW Online Express Cloud based management software, User Authentication, Department ID, Authentication, Access Management System
Optional: My Print Anywhere secure print (Requires uniFLOW)

Data

Standard: Trusted Platform Module (TPM), Hard Disk Password Lock, Hard Disk Drive Erase, Mail Box Password Protection, Hard Disk Drive Encryption(FIPS140-2 Validated), Common Criteria Certification (DIN ISO 15408)
Optional: Hard Disk Drive removal, Data Loss Prevention (Requires uniFLOW)

Network

Standard: IP/Mac Address Filtering, IPSEC, TLS Encrypted Communication, SNMP v3.0, IEEE 802.1X, IPv6, SMTP Authentication, POP Authentication before SMTP, S/MIME

Document

Standard: Secure Print, Adobe LiveCycle® Rights Management ES2.5 Integration, Encrypted PDF, Encrypted Secure Print, Device signature, Secure Watermarks
Optional: User signature, Document Scan locking

ENVIRONMENTAL SPECIFICATIONS

Operating Environment

Temperature: 10 to 30 °C (50 to 86 °F)
Humidity: 20 to 80 % RH (no condensation)
220-240 V (±10 %), 50/60 Hz (±2 Hz), 4 Amp

Power source

Power consumption

Maximum: Approx. 1.5 kW
Printing: iR-ADV C3520i II* Approx. 394.8 Wh or Less⁵
iR-ADV C3525i II* Approx. 412.5 Wh or Less⁵
iR-ADV C3530i II* Approx. 435.7 Wh or Less⁵
Standby: Approx. 41.2 Wh
Sleep mode: Approx. 0.8 W⁶
Plugin Off: Approx. 0.2W⁵
Typical Electricity Consumption (TEC) rating⁷:
0.8 kWh (iR-ADV C3520i II*)
0.9 kWh (iR-ADV C3525i II*)
1.2 kWh (iR-ADV C3530i II*)

Noise levels

Sound Power Level (LwAd)⁸
iR-ADV C3520i II*: Active (BW): 63.3 dB or Less⁵, Active (CL): 63.4 dB or Less⁵, Standby: 27 dB or Less⁹
iR-ADV C3525i II*: Active (BW): 64 dB or Less⁵, Active (CL): 64.1 dB or Less⁵, Standby: 27 dB or Less⁹
iR-ADV C3530i II*: Active (BW): 64.2 dB or Less⁵, Active (CL): 64.3 dB or Less⁵, Standby: 27 dB or Less⁹

Sound Pressure (LpAm)⁷

Bystander's position:
iR-ADV C3520i II*: Active (BW): 48.6 dB or Less⁵, Active (CL): 48.7 dB or Less⁵, Standby: 9.8 dB or Less⁹
iR-ADV C3525i II*: Active (BW): 49.3 dB or Less⁵, Active (CL): 49.4 dB or Less⁵, Standby: 9.9 dB or Less⁹
iR-ADV C3530i II*: Active (BW): 49.5 dB or Less⁵, Active (CL): 49.6 dB or Less⁵, Standby: 9.6 dB or Less⁹

Standards

ENERGY STAR® Qualified
Ecomark
Blue Angel

CONSUMABLES

Toner Cartridge/s

Toner (Estimated Yield @5% Coverage)

C-EXV 49 TONER BK/C/M/Y
C-EXV 49 TONER BK: 36,000 pages
C-EXV 49 TONER C/M/Y: 19,000 pages

HARDWARE ACCESSORIES

For full information on options available for the iR-ADV C3500 II* series, please refer to the specification tables on your local Canon web site.

Footnotes

II* indicates that this model has been upgraded to new system software and includes additional security features as standard.

^[1] BOOKLET FINISHER-AA1 only

^[2] With INNER 2/4 HOLE PUNCHER-A1 or INNER 4 HOLE PUNCHER-A1

^[3] Time between device power-on and when the start key is enabled

^[4] Only PDF print from websites is supported

^[5] Data taken from Blue Angel Certification User Notes

^[6] 0.8W sleep mode is not available in all circumstances due to certain settings.

^[7] Typical Electricity Consumption (TEC) rating represents the typical electricity consumed by a product during 1 week, measured in kilowatt-hours (kWh). The test methodology is defined by Energy Star (<http://www.eu-energystar.org>).

^[8] Declared noise emission in accordance with ISO 7779

^[9] Data taken from ECO declaration

Software & Solutions



Certifications and compatibility



Canon Inc.
canon.com

Canon Europe
canon-europe.com

English edition
© Canon Europa N.V., 2018

