

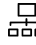


imageRUNNER ADVANCE 6500 II series

HIGH QUALITY, EFFICIENT AND DEPENDABLE



QUICK FACTS

-  **Format:** Mono A3
- Maximum number of Paper Cassettes:** 5
- Paper input Capacity:** 7,700 sheets
- Finishing Capabilities:** Collate, Group, Offset, Staple, Saddle Stitch, Hole Punch, Insertion, C & Z folding, Staple-Free Staple, Staple On Demand
- ADF Capacity:** 300 sheets
- ADF Type:** Platen and DADF
-  **A4 Mono Print Speed Range:** 55 - 75ppm
- Scan Speed:** 120ipm
-  **Print Languages:** UFR II, PCL6
- Optional:** Adobe PostScript 3, EFI Fiery external server
- Print Resolution:** 1,200 x 1,200
- Suitable for Large workgroups or departments in a floor standing environment
- Produces fast print speeds of up to 105 ppm in black and white. It is capable of maintaining an outstanding output speed while printing on heavy media
- Class leading Typical Electricity Consumption (TEC) ratings
- Consumes as little as 0.9W in sleep mode
- Qualifies for the latest stringent Blue Angel certification
- Fusing technologies, pO toner, and innovative sleep mode features help lower overall energy consumption. Consumes as little as 0.9 W in sleep mode.
- Create professional-looking reports, booklets, newsletters, manuals, proposals, and contracts with flexible finishing options such as professional punching, folding, document insertion, stapling and booklet making.
- Optional Fiery-based imagePASS-Y2 controllers enhance processing, job management, workflow automation and accurate colour reproduction.
- Save on transmission costs by utilising the Fax over IP option
- Options for cost recovery and coin vending integration.

UNIFIED FIRMWARE PLATFORM

Common Firmware and features that apply to all imageRUNNER ADVANCE Generation 3 2nd Edition models

SECURITY:

- Prevent unauthorised distribution of sensitive information with our most secure imageRUNNER ADVANCE ever through an array of standard and optional document security features
- Choose from device based or Cloud based authentication without the need for an additional server
- Ability to disable functions by user to prevent unauthorised usage
- Secure Print and Mailbox enhance document confidentiality
- Ensure information privacy and security across your network with IPsec, port filtering capabilities, and SSL technology
- Mitigate the risk associated with the governance of sensitive information and data privacy (PII data) with the Industry-first Data Loss Prevention and auditing of prints, copies, scans and faxes through uniFLOW

PRODUCTIVITY:

- Advanced personalisation enables a unique, personal experience tailored to meet each user's workflow needs.
- Intuitive user interface with a large, responsive colour touchscreen with smart phone-like usability
- Motion sensor technology wakes device from sleep mode.
- Convenient Staple-on-demand functionality.
- Automatically remove blank pages when scanning.
- Scan and convert documents to Searchable PDF, Microsoft® Word, and Microsoft® PowerPoint
- Effortless capturing of paper-based documents with rapid single pass scanning (DADF) and smart media handling capabilities such as multi-sheet feed detection, help speed up the process of digitising documents.
- Secure mobile printing as standard
- Enable guest printing with Direct Connection
- Substitute your PC for your smart device to complete your day-to-day workflows
- Support for industry standards such as Apple Airprint® and Mopria®

Canon

imageRUNNER ADVANCE 6500 II series

INTEGRATION:

- Tight integration with uniFLOW Online Express, a Cloud based output management system
- uniFLOW Online Express provides extensive tracking and reporting capabilities from a central web based system.
- Collaborates with business applications and external systems in the cloud
- Canon's MEAP platform provides process optimisation, by integrating with a range of powerful document, capture and output management solutions such as uniFLOW
- Canon's device management tools give you a centralised point of control across your entire fleet, upgrade devices, check device status and consumables, turn off devices remotely, capture meter readings, as well as manage address books and printer drivers
- Supports industry and network standards i.e. PCL and Adobe PostScript for seamless integration

COST MANAGEMENT:

- Technology designed to reduce total cost of print
- User activity tracking provides visibility of print behaviour
- Apply policies and restrict usage at function level by user*

- Remote diagnostics and assistance, help reduce costs by minimising downtime and time spent by IT resolving issues
- Remote and centralised fleet management simplifies IT management of devices and fleets

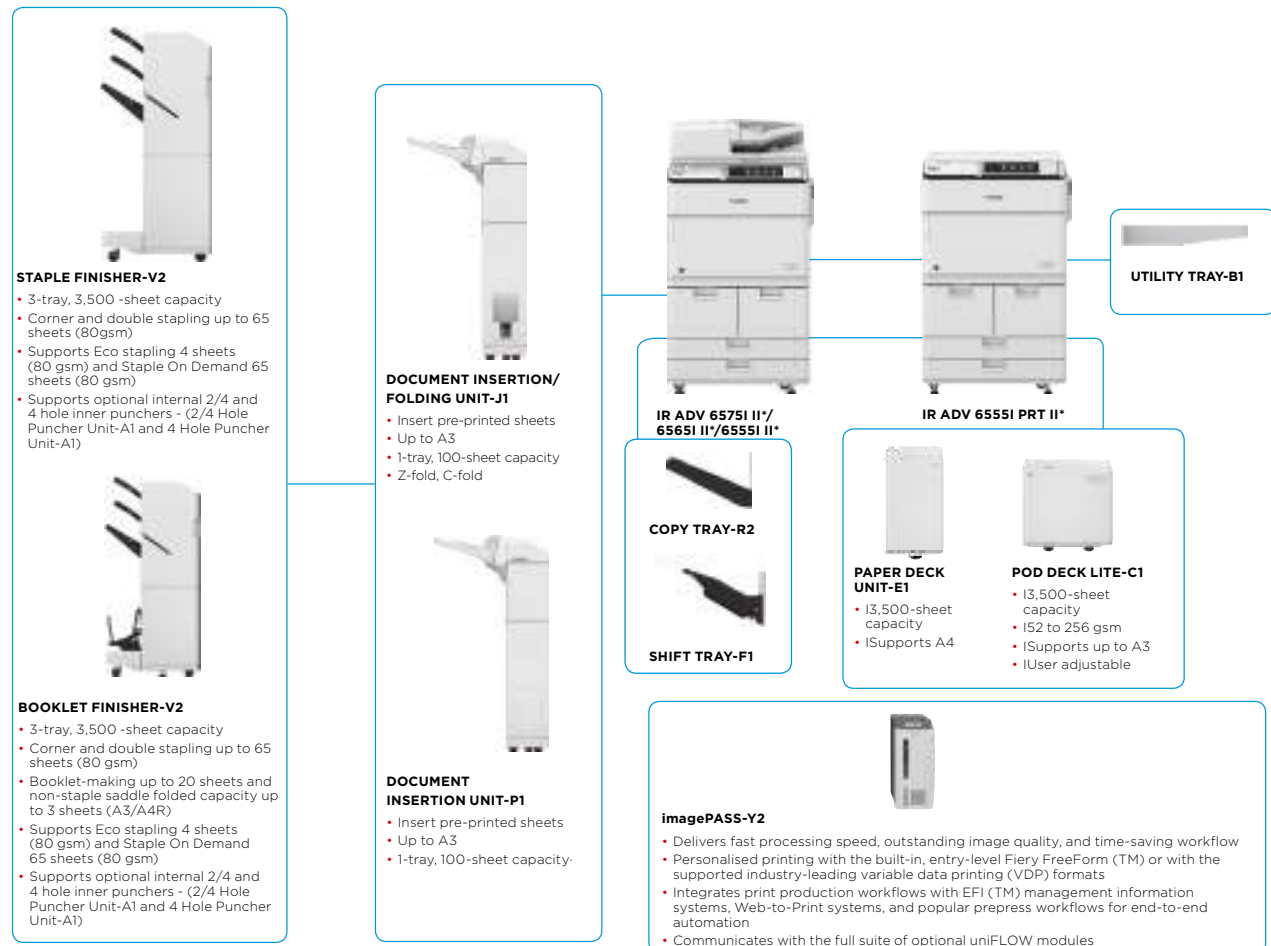
QUALITY AND RELIABILITY:

- Designed to achieve maximum uptime with intuitive user maintenance videos and status notifications, to help keep supplies replenished.
- Canon's signature reliability and engine technologies provide high quality output to meet the needs of busy departments.
- Quiet finishing provides less interruptions to workers, keeping employees productive

SUSTAINABILITY:

- Incorporates sustainable design and a focus on minimising environmental impact
- ENERGY STAR® qualified
- Minimise waste with default 2-sided printing, secure printing, and the ability to hold print jobs, preview them and change print settings at the device, achieving the desired results at the first time of printing

Main configuration options



This flat configuration is for illustration purpose only. For a complete list of options and the exact compatibility relationships, please refer to the online product configurator. II* indicates that this model has been upgraded to new system software and includes additional security features as standard.

TECHNICAL SPECIFICATIONS

imageRUNNER ADVANCE 6500 II series

MAIN UNIT

Machine type

Core functions

Processor Speed

Control Panel

Memory

Hard Disk drive

Mirroring Hard Disk Drive

Interface Connection

Monochrome Laser Multifunctional
Print, Copy, Scan¹, Send¹, Store and Optional Fax¹
Canon Dual Custom Processor (Shared) 1.75 Ghz
25.6 cm (10.1 inch) TFT LCD WSVGA Colour Touch panel
Standard: 3.0GB RAM
Optional: 250GB
Maximum: 1TB
Optional: 250GB, 1TB
NETWORK
Standard: 1000Base-T/100Base-TX/10Base-T, Wireless LAN (IEEE 802.11 b/g/n)
Optional: NFC, Bluetooth Low Energy

OTHERS

Standard: USB 2.0 (Host) x2, USB 3.0 (Host) x1, USB 2.0 (Device) x1

Optional: Serial Interface, Copy Control Interface
2 x 1,500-sheet cassettes + 2 x 550-sheet cassettes (80gsm)

100-sheet multi-purpose tray (80gsm)
Additional 3,500 sheets (POD DECK LITE-C1 or PAPER DECK UNIT-E1)

7,700 sheets (80gsm)

With Copy Tray: 250 sheets (A4, 80 gsm)

With Shift Tray: 500 sheets (A4, 80 gsm)

With External Finishers: Max. 3,500-sheets (A4, 80 gsm)

Collate, Group
With External Finisher: Collate, Group, Offset, Staple, Saddle Stitch, Hole Punch, Insertion, C & Z folding

Cassettes 1/2:
Thin paper, Plain paper, Recycled paper, Colour paper, Pre-punched paper, Heavy paper, Letterhead, Bond paper

Cassettes 3/4:
Thin paper, Plain paper, Recycled paper, Colour paper, Pre-punched paper, Heavy paper, Letterhead, Bond paper, Tab paper*

* Requires Tab Feeding attachment Kit-B1

Multi-purpose tray:
Thin paper, Plain paper, Recycled paper, Colour paper, Pre-punched paper, Heavy paper, Bond paper, Transparency, Labels, Tracing paper², Letterhead, Tab paper

POD DECK LITE-C1:
Thin paper, Plain paper, Recycled paper, Colour paper, Pre-punched paper, Heavy paper, Bond paper, Transparency, Labels, Letterhead, Tab paper

PAPER DECK UNIT-E1:
Thin paper, Plain paper, Recycled paper, Colour paper, Pre-punched paper, Heavy paper, Bond paper, Letterhead

Paper input (Standard)

Paper input (Option)

Maximum paper input capacity

Paper output capacity

Finishing capabilities

Supported media types

Supported media sizes

Supported media weights

Warm-up Time

Dimensions (W x D x H)

Installation Space(W x D)

Weight

Cassettes 1/2:
Standard size: A4, B5

Cassettes 3/4:
Standard size: A4, A4R, A3, A5R, B5, B5R
Custom size: 139.7 mm x 182 mm to 297 mm x 431.8 mm

Multi-purpose tray:
Standard size: A4, A4R, A3, A5R, B5, B5R, Envelopes (No. 10(COM 10), ISO-B5, Monarch, ISO-C5, DL)
Custom size: 100 mm x 148 mm to 297 mm x 431.8 mm

PAPER DECK UNIT-E1:
A4

POD DECK LITE-C1:
A4, A4R, A3, A5R, and Custom size (139.7 mm x 182 mm to 297 mm x 431.8 mm)

Cassettes 1/2:
52 to 220 gsm

Cassettes 3/4:
52 to 220 gsm

Multi-purpose tray:
52 to 256 gsm

Duplex:
52 to 220 gsm

Paper Deck:
52 to 256 gsm

From Power On: 30 Seconds or Less

From Sleep Mode: 30 Seconds or Less

Quick Startup Mode: 4 Seconds³

iR ADV 6555i PRT II¹:
670 mm x 779 mm x 1052 mm

iR ADV 6555i II¹/6565i II¹/6575i II¹:
670 mm x 779 mm x 1220 mm

1,362 mm x 1,353 mm (Basic: Multi-purpose tray + Cassette drawers open + Copy Tray)

2,407 mm x 1,353 mm (Fully configured: Booklet Finisher + A3 Paper Deck + Insertion and folding unit + Puncher Unit + Cassette drawers open)

Approx. 234kg⁴

PRINT SPECIFICATIONS

Printing method

Print Speed (BW/CL)

Print Resolution

Page description languages

Double Sided Printing

Direct Print

Printing from mobile and cloud

Fonts

Operating System

COPY SPECIFICATIONS¹

Copy Speed

First-Copy-Out Time (BW/CL)

Copy resolution

Multiple Copies

Copy Exposure

Magnification

Preset Reductions

Preset Enlargements

SCAN SPECIFICATIONS¹

Standard type

Pull Scan Specifications

Scan Resolution

Acceptable Originals/weights

Scan Method

Monochrome Laser Beam Printing

iR ADV 6555i PRT II¹/6555i II¹:
55 ppm (A4), 32 ppm (A3), 40 ppm (A4R), 35 ppm (A5R)

iR ADV 6565i II¹:
65 ppm (A4), 32 ppm (A3), 47 ppm (A4R), 35 ppm (A5R)

iR ADV 6575i II¹:
75 ppm (A4), 37 ppm (A3), 54 ppm (A4R), 35 ppm (A5R)

1,200 dpi x 1,200 dpi, 600 dpi x 600 dpi

UFR II, PCL 6 (standard)

Genuine Adobe PostScript Level 3 (Option)

Automatic (Standard)

Direct printing available from USB memory key, Advanced space, Remote UI and Web Browser⁵

Supported file types: TIFF, JPEG, PDF and XPS.

A range of software and MEAP-based solutions is available to provide printing from mobile devices or internet-connected devices and cloud-based services depending on your requirements.

Please contact your sales representative for further information.

PCL fonts: 93 Roman, 10 Bitmap fonts, 2 OCR fonts, Andalé Mono WT J/K/S/T* (Japanese, Korean, Simplified and Traditional Chinese)*

PS fonts: 136 Roman

*Requires optional PCL INTERNATIONAL FONT SET-A1

UFR II: Windows Vista/Server 2008/7/Server 2008 R2/Server 2012/8.1/Server 2012 R2/10/Server 2016, MAC OS X (10.7 or later)

PCL: Windows Vista/Server 2008/7/Server 2008 R2/Server 2012/8.1/Server 2012 R2/10/Server 2016

PS: Windows Vista/Server 2008/7/Server 2008 R2/Server 2012/8.1/Server 2012 R2/10/Server 2016, MAC OS X (10.7 or later)

PPD: Windows Vista/7/8.1/10, MAC OS X (10.3.9 or later)

SAP Device Types are available via the SAP Market Place. Please refer to <http://software.canon-europe.com/> for availability of print solutions for other operating systems and environments including AS/400, UNIX, Linux and Citrix. Some of these solutions are chargeable.

iR ADV 6555i II¹:
55 ppm (A4), 32 ppm (A3), 40 ppm (A4R), 35 ppm (A5R)

iR ADV 6565i II¹:
65 ppm (A4), 32 ppm (A3), 47 ppm (A4R), 35 ppm (A5R)

iR ADV 6575i II¹:
75 ppm (A4), 37 ppm (A3), 54 ppm (A4R), 35 ppm (A5R)

iR ADV 6555i II¹: Approx. 3.3 seconds or less

iR ADV 6565i II¹: Approx. 3.3 seconds or less

iR ADV 6575i II¹: Approx. 3.1 seconds or less

Reading: 600 dpi x 600 dpi

Printing: 1,200 dpi x 1,200 dpi

Up to 9,999 copies

Automatic or Manual (9 Levels)

25% - 400% (1% Increments)

25%, 50%, 71%

141%, 200%, 400%

iR ADV 6555i PRT II¹: Standard: Reader and platen cover

iR ADV 6555i II¹/6565i II¹/6575i II¹: Standard reader and Single-pass Duplexing Automatic Document Feeder (DADF)

Colour Network ScanGear2. For both TWAIN and WIA

Supported OS: Windows Vista/7/8.1/10/Server 2008/2008 R2/2012/2012 R2/2016

100 x 100 dpi, 150 x 150 dpi, 200 x 100 dpi, 200 x 200 dpi, 300 x 300 dpi, 200 x 400 dpi, 400 x 400 dpi, 600 x 600 dpi

Platen: Sheet, Book, 3-Dimensional Objects (Up to 2kg)

Feeder size: A4, A4R, A3, A5, A5R

Feeder weight:

1-sided scanning: 38 to 220 gsm/64 to 220 gsm (BW/CL)

2-sided scanning: 50 to 220 gsm/64 to 220 gsm (BW/CL)

Send functionality available on all models

Scan to USB Memory Key: Available on all models

Scan to Mobiles or internet-connected devices: A range of solutions is available to provide scanning to mobile devices or internet-connected devices depending on your requirements. Please contact your sales representative for further information

Scan to cloud-based services: A range of solutions is available to provide scanning to cloud-based services depending on your requirements. Please contact your sales representative for further information

TWAIN/WIA Pull scanning available on all models

TECHNICAL SPECIFICATIONS

imageRUNNER ADVANCE 6500 II series

Scan Speed (BW/Colour; A4)

Single-sided Scanning (BW):
120 ipm (300 dpi) / 120 ipm (600 dpi)
Single-sided Scanning (Colour):
120 ipm (300 dpi) / 60 ipm (600 dpi)
Double-sided Scanning (BW):
240 ipm (300 dpi) / 150 ipm (600 dpi)
Double-sided Scanning (Colour):
220 ipm (300dpi) / 60 ipm (600 dpi)
300 Sheets (80 gsm)
2-sided to 2-sided (Automatic)

Paper Capacity Double sided scanning

SEND SPECIFICATIONS¹

Optional / Standard Destination

Standard on all models
E-Mail/Internet FAX (SMTP), SMB, FTP, WebDAV,
Mail Box, Super G3 Fax (Optional), IP Fax (Optional)
LDAP (2,000)/Local (1,600)/Speed dial (200)
100 x 100 dpi, 150 x 150 dpi, 200 x 100 dpi,
200 x 200 dpi, 200 x 400 dpi, 300 x 300 dpi,
400 x 400 dpi, 600 x 600 dpi

Communication protocol

File: FTP, SMB v3.0, WebDAV
E-mail/I-Fax: SMTP, POP3, I-Fax (Simple, Full)

File Format

Standard: TIFF, JPEG, PDF (Compact, Searchable,
Apply PDF file protection by Adobe Live Cycle Rights
Management™, Optimise for Web, PDF A/1-b, Encrypted),
XPS (Compact, Searchable), Office Open XML
(PowerPoint, Word), PDF/XPS (Digital Signature)
Optional: PDF (Trace&Smooth)

FAX SPECIFICATIONS¹

Optional / Standard

Modem Speed

Optional on all models
Super G3: 33.6 kbps ⁶
G3: 14.4 kbps

Compression Method Resolution

MH, MR, MMR, JBIG
400 x 400 dpi, 200 x 400 dpi, 200 x 200 dpi,
200 x 100 dpi

Sending/Recording Size

A5 and A5R* to A3
*Sent as A4

FAX memory

Up to 30,000 pages ⁶

Speed dials

Max. 200

Group dials/destinations

Max. 199 dials

Sequential broadcast

Max. 256 addresses

Memory backup

Yes

SECURITY SPECIFICATIONS

Authentication

Standard: Universal Login Manager (Device and Function
Level Log-in), uniFLOW Online Express Cloud based
management software, User Authentication, Department
ID, Authentication, Access Management System

Optional: My Print Anywhere secure print
(Requires uniFLOW)

Data

Standard: Trusted Platform Module (TPM), Hard Disk
Password Lock, Hard Disk Drive Erase, Mail Box Password
Protection, Hard Disk Drive Encryption(FIPS140-2
Validated), Common Criteria Certification (DIN ISO 15408)

Optional: Hard Disk Drive Mirroring, Hard Disk Drive
removal, Data Loss Prevention (Requires uniFLOW)

Network

Standard: IP/Mac Address Filtering, IPSEC, TLS
Encrypted Communication, SNMP V3.0, IEEE 802.1X,
IPv6, SMTP Authentication, POP Authentication before
SMTP

Document

Standard: Secure Print, Adobe LiveCycle® Rights
Management ES2.5 Integration, Encrypted PDF,
Encrypted Secure Print, Device signature, Secure
Watermarks

Optional: User signature, Document Scan locking

ENVIRONMENTAL SPECIFICATIONS

Operating Environment

Temperature: 10 to 30 °C (50 to 86 °F)
Humidity: 20 to 80% RH (no condensation)
220-240V(±10%), 50/60Hz (±2 Hz), 10Amp

Power source

Maximum: Approx. 2.4 KW
Printing: 1,397.9Wh or less
Standby: Approx. 260 W

Power consumption

Sleep mode: Approx. 0.9 W or less ⁷
Plugin Off: 0.3W

Typical Electricity Consumption (TEC) rating ⁸:
4.9 kWh (iR ADV 6555i II*/6555i PRT II*)
6.1 kWh (iR ADV 6565i II*)
6.7 kWh (iR ADV 6575i II*)

Noise levels (BW/CL)

Sound Pressure⁹
Active: 75 dB or less
Standby: 58 dB or less
ENERGY STAR® Qualified
Ecomark
Blue Angel ¹

Standards

CONSUMABLES

Toner Cartridge/s

Toner (Estimated Yield @ 6% Coverage)

C-EXV 36 TONER BK
C-EXV 36 TONER BK: 56,000 pages

HARDWARE ACCESSORIES

For full information on options available for the
iR ADV 6500 II* series, please refer to the specification
tables on your local Canon web site.

Footnotes

II* indicates that this model has been upgraded to new system software and includes
additional security features as standard.

^[1] Not available on 6555i PRT II

^[2] Some types of tracing paper cannot be used.

^[3] The time until key operations can be performed on the touch panel display is 3 seconds
or less.

^[4] Including the toner bottle.

^[5] PDF print only from websites.

^[6] Based on ITU-T Standard Chart No. 1

^[7] 0.9 watt sleep mode may not be possible in all circumstances. Certain network
configurations and options may prevent the device from entering deep sleep mode.
Please refer to the user guide for more information

^[8] Typical Electricity Consumption (TEC) rating represents the typical electricity consumed
by a product during 1 week, measured in kilowatt-hours (kWh). The test methodology is
defined by Energy Star (<http://www.eu-energystar.org>).

^[9] Declared noise emission in accordance with ISO 7779

Software & Solutions



Certifications and compatibility



Canon Inc.
canon.com

Canon Europe
canon-europe.com

English edition

© Canon Europa N.V., 2018

