

# imageRUNNER ADVANCE 6500 II series

## HIGH QUALITY, EFFICIENT AND DEPENDABLE



### QUICK FACTS

- **Format:** Mono A3
- **Maximum number of Paper Cassettes:** 5
- **Paper input Capacity:** 7,700 sheets
- **Finishing Capabilities:** Collate, Group, Offset, Staple, Saddle Stitch, Hole Punch, Insertion, C & Z folding, Staple-Free Staple, Staple On Demand
- **ADF Capacity:** 300 sheets
- **ADF Type:** Platen and DADF
- **A4 Mono Print Speed Range:** 55 - 75ppm
- **Scan Speed:** 120ipm
- **Print Languages:** UFR II, PCL6
- **Optional:** Adobe PostScript 3, EFI Fiery external server
- **Print Resolution:** 1,200 x 1,200
- Suitable for Large workgroups or departments in a floor standing environment
- Produces fast print speeds of up to 105 ppm in black and white. It is capable of maintaining an outstanding output speed while printing on heavy media
- Class leading Typical Electricity Consumption (TEC) ratings
- Consumes as little as 0.9W in sleep mode
- Qualifies for the latest stringent Blue Angel certification
- Fusing technologies, pO toner, and innovative sleep mode features help lower overall energy consumption. Consumes as little as 0.9 W in sleep mode.
- Create professional-looking reports, booklets, newsletters, manuals, proposals, and contracts with flexible finishing options such as professional punching, folding, document insertion, stapling and booklet making.
- Optional Fiery-based imagePASS-Y2 controllers enhance processing, job management, workflow automation and accurate colour reproduction.
- Save on transmission costs by utilising the Fax over IP option
- Options for cost recovery and coin vending integration.

## UNIFIED FIRMWARE PLATFORM

Common Firmware and features that apply to all imageRUNNER ADVANCE Generation 3 2nd Edition models

### SECURITY:

- Prevent unauthorised distribution of sensitive information with our most secure imageRUNNER ADVANCE ever through an array of standard and optional document security features
- Choose from device based or Cloud based authentication without the need for an additional server
- Ability to disable functions by user to prevent unauthorised usage
- Secure Print and Mailbox enhance document confidentiality
- Ensure information privacy and security across your network with IPsec, port filtering capabilities, and SSL technology
- Mitigate the risk associated with the governance of sensitive information and data privacy (PII data) with the Industry-first Data Loss Prevention and auditing of prints, copies, scans and faxes through uniFLOW

### PRODUCTIVITY:

- Advanced personalisation enables a unique, personal experience tailored to meet each user's workflow needs.
- Intuitive user interface with a large, responsive colour touchscreen with smart phone-like usability
- Motion sensor technology wakes device from sleep mode.
- Convenient Staple-on-demand functionality.
- Automatically remove blank pages when scanning.
- Scan and convert documents to Searchable PDF, Microsoft® Word, and Microsoft® PowerPoint
- Effortless capturing of paper-based documents with rapid single pass scanning (DADF) and smart media handling capabilities such as multi-sheet feed detection, help speed up the process of digitising documents.
- Secure mobile printing as standard
- Enable guest printing with Direct Connection
- Substitute your PC for your smart device to complete your day-to-day workflows
- Support for industry standards such as Apple Airprint® and Mopria®

**Canon**

# imageRUNNER ADVANCE 6500 II series

## INTEGRATION:

- Tight integration with uniFLOW Online Express, a Cloud based output management system
- uniFLOW Online Express provides extensive tracking and reporting capabilities from a central web based system.
- Collaborates with business applications and external systems in the cloud
- Canon's MEAP platform provides process optimisation, by integrating with a range of powerful document, capture and output management solutions such as uniFLOW
- Canon's device management tools give you a centralised point of control across your entire fleet, upgrade devices, check device status and consumables, turn off devices remotely, capture meter readings, as well as manage address books and printer drivers
- Supports industry and network standards i.e. PCL and Adobe PostScript for seamless integration

## COST MANAGEMENT:

- Technology designed to reduce total cost of print
- User activity tracking provides visibility of print behaviour
- Apply policies and restrict usage at function level by user\*

- Remote diagnostics and assistance, help reduce costs by minimising downtime and time spent by IT resolving issues
- Remote and centralised fleet management simplifies IT management of devices and fleets

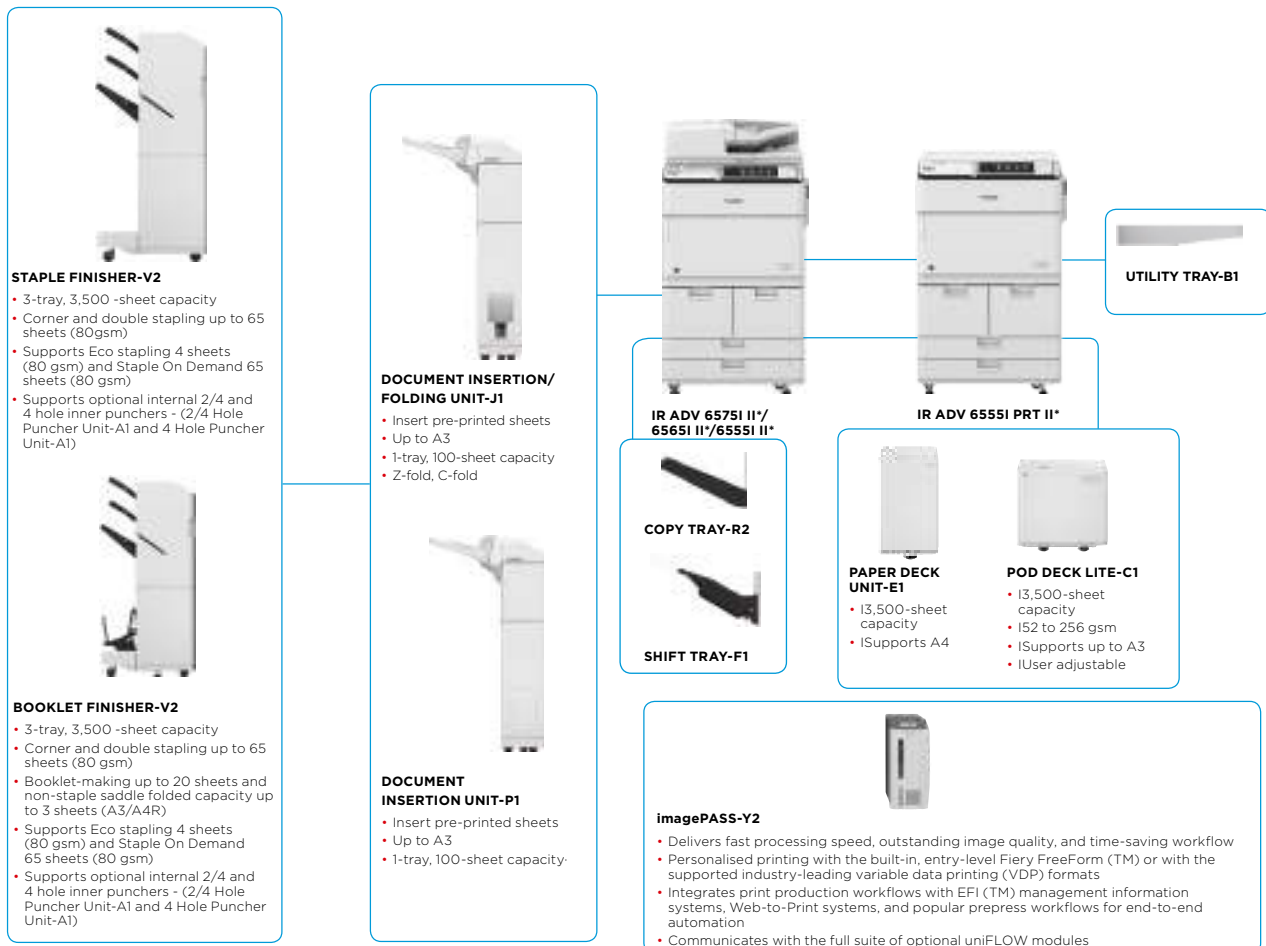
## QUALITY AND RELIABILITY:

- Designed to achieve maximum uptime with intuitive user maintenance videos and status notifications, to help keep supplies replenished.
- Canon's signature reliability and engine technologies provide high quality output to meet the needs of busy departments.
- Quiet finishing provides less interruptions to workers, keeping employees productive

## SUSTAINABILITY:

- Incorporates sustainable design and a focus on minimising environmental impact
- ENERGY STAR® qualified
- Minimise waste with default 2-sided printing, secure printing, and the ability to hold print jobs, preview them and change print settings at the device, achieving the desired results at the first time of printing

## Main configuration options



This flat configuration is for illustration purpose only. For a complete list of options and the exact compatibility relationships, please refer to the online product configurator.

II\* indicates that this model has been upgraded to new system software and includes additional security features as standard.

# TECHNICAL SPECIFICATIONS

# imageRUNNER ADVANCE 6500 II series

## MAIN UNIT

### Machine type

### Core functions

### Processor Speed

### Control Panel

### Memory

### Hard Disk drive

### Mirroring Hard Disk Drive

### Interface Connection

Monochrome Laser Multifunctional  
Print, Copy, Scan<sup>1</sup>, Send<sup>1</sup>, Store and Optional Fax<sup>1</sup>  
Canon Dual Custom Processor (Shared) 1.75 Ghz  
25.6 cm (10.1 inch) TFT LCD WSVGA Colour Touch panel  
Standard: 3.0GB RAM  
Optional: 250GB  
Maximum: 1TB  
Optional: 250GB, 1TB  
NETWORK  
Standard: 1000Base-T/100Base-TX/10Base-T, Wireless LAN (IEEE 802.11 b/g/n)  
Optional: NFC, Bluetooth Low Energy

### OTHERS

Standard: USB 2.0 (Host) x2, USB 3.0 (Host) x1, USB 2.0 (Device) x1

Optional: Serial Interface, Copy Control Interface  
2 x 1,500-sheet cassettes + 2 x 550-sheet cassettes (80gsm)

100-sheet multi-purpose tray (80gsm)  
Additional 3,500 sheets (POD DECK LITE-C1 or PAPER DECK UNIT-E1)

7,700 sheets (80gsm)

With Copy Tray: 250 sheets (A4, 80 gsm)

With Shift Tray: 500 sheets (A4, 80 gsm)

With External Finishers: Max. 3,500-sheets (A4, 80 gsm)

Collate, Group  
With External Finisher: Collate, Group, Offset, Staple, Saddle Stitch, Hole Punch, Insertion, C & Z folding

Cassettes 1/2:  
Thin paper, Plain paper, Recycled paper, Colour paper, Pre-punched paper, Heavy paper, Letterhead, Bond paper

Cassettes 3/4:  
Thin paper, Plain paper, Recycled paper, Colour paper, Pre-punched paper, Heavy paper, Letterhead, Bond paper, Tab paper<sup>\*</sup>

<sup>\*</sup> Requires Tab Feeding attachment Kit-B1

Multi-purpose tray:  
Thin paper, Plain paper, Recycled paper, Colour paper, Pre-punched paper, Heavy paper, Bond paper, Transparency, Labels, Tracing paper<sup>2</sup>, Letterhead, Tab paper

POD DECK LITE-C1:  
Thin paper, Plain paper, Recycled paper, Colour paper, Pre-punched paper, Heavy paper, Bond paper, Transparency, Labels, Letterhead, Tab paper

PAPER DECK UNIT-E1:  
Thin paper, Plain paper, Recycled paper, Colour paper, Pre-punched paper, Heavy paper, Bond paper, Letterhead

### Paper input (Standard)

### Paper input (Option)

### Maximum paper input capacity

### Paper output capacity

### Finishing capabilities

### Supported media types

### Supported media sizes

### Supported media weights

### Warm-up Time

### Dimensions (W x D x H)

### Installation Space(W x D)

### Weight

Cassettes 1/2:  
Standard size: A4, B5

Cassettes 3/4:  
Standard size: A4, A4R, A3, A5R, B5, B5R  
Custom size: 139.7 mm x 182 mm to 297 mm x 431.8 mm

Multi-purpose tray:  
Standard size: A4, A4R, A3, A5R, B5, B5R, Envelopes (No. 10(COM 10), ISO-B5, Monarch, ISO-C5, DL)  
Custom size: 100 mm x 148 mm to 297 mm x 431.8 mm

PAPER DECK UNIT-E1:  
A4

POD DECK LITE-C1:  
A4, A4R, A3, A5R, and Custom size (139.7 mm x 182 mm to 297 mm x 431.8 mm)

Cassettes 1/2:  
52 to 220 gsm

Cassettes 3/4:  
52 to 220 gsm

Multi-purpose tray:  
52 to 256 gsm

Duplex:  
52 to 220 gsm

Paper Deck:  
52 to 256 gsm

From Power On: 30 Seconds or Less  
From Sleep Mode: 30 Seconds or Less  
Quick Startup Mode: 4 Seconds<sup>3</sup>

iR ADV 6555i PRT II<sup>1</sup>:  
670 mm x 779 mm x 1052 mm  
iR ADV 6555i II<sup>1</sup>/6565i II<sup>1</sup>/6575i II<sup>1</sup>:  
670 mm x 779 mm x 1220 mm

1,362 mm x 1,353 mm (Basic: Multi-purpose tray + Cassette drawers open + Copy Tray)  
2,407 mm x 1,353 mm (Fully configured: Booklet Finisher + A3 Paper Deck + Insertion and folding unit + Puncher Unit + Cassette drawers open)

Approx. 234kg<sup>4</sup>

## PRINT SPECIFICATIONS

### Printing method

### Print Speed (BW/CL)

### Print Resolution

### Page description languages

### Double Sided Printing

### Direct Print

### Printing from mobile and cloud

### Fonts

### Operating System

## COPY SPECIFICATIONS<sup>1</sup>

### Copy Speed

### First-Copy-Out Time (BW/CL)

### Copy resolution

### Multiple Copies

### Copy Exposure

### Magnification

### Preset Reductions

### Preset Enlargements

## SCAN SPECIFICATIONS<sup>1</sup>

### Standard type

### Pull Scan Specifications

### Scan Resolution

### Acceptable Originals/weights

### Scan Method

Monochrome Laser Beam Printing

iR ADV 6555i PRT II<sup>1</sup>/6555i II<sup>1</sup>:  
55 ppm (A4), 32 ppm (A3), 40 ppm (A4R), 35 ppm (A5R)

iR ADV 6565i II<sup>1</sup>:  
65 ppm (A4), 32 ppm (A3), 47 ppm (A4R), 35 ppm (A5R)

iR ADV 6575i II<sup>1</sup>:  
75 ppm (A4), 37 ppm (A3), 54 ppm (A4R), 35 ppm (A5R)

1,200 dpi x 1,200 dpi, 600 dpi x 600 dpi

UFR II, PCL 6 (standard)

Genuine Adobe PostScript Level 3 (Option)

Automatic (Standard)

Direct printing available from USB memory key, Advanced space, Remote UI and Web Browser<sup>5</sup>

Supported file types: TIFF, JPEG, PDF and XPS.

A range of software and MEAP-based solutions is available to provide printing from mobile devices or internet-connected devices and cloud-based services depending on your requirements.

Please contact your sales representative for further information.

PCL fonts: 93 Roman, 10 Bitmap fonts, 2 OCR fonts, Andalé Mono WT J/K/S/T\* (Japanese, Korean, Simplified and Traditional Chinese)\*

PS fonts: 136 Roman

<sup>1</sup>Requires optional PCL INTERNATIONAL FONT SET-A1  
UFR II: Windows Vista/Server 2008/7/Server 2008 R2/Server 2012/8.1/Server 2012 R2/10/Server 2016, MAC OS X (10.7 or later)

PCL: Windows Vista/Server 2008/7/Server 2008 R2/Server 2012/8.1/Server 2012 R2/10/Server 2016  
PS: Windows Vista/Server 2008/7/Server 2008 R2/Server 2012/8.1/Server 2012 R2/10/Server 2016, MAC OS X (10.7 or later)

PPD: Windows Vista/7/8.1/10, MAC OS X (10.3.9 or later)

SAP Device Types are available via the SAP Market Place. Please refer to <http://software.canon-europe.com/> for availability of print solutions for other operating systems and environments including AS/400, UNIX, Linux and Citrix. Some of these solutions are chargeable.

iR ADV 6555i II<sup>1</sup>:  
55 ppm (A4), 32 ppm (A3), 40 ppm (A4R), 35 ppm (A5R)

iR ADV 6565i II<sup>1</sup>:  
65 ppm (A4), 32 ppm (A3), 47 ppm (A4R), 35 ppm (A5R)

iR ADV 6575i II<sup>1</sup>:  
75 ppm (A4), 37 ppm (A3), 54 ppm (A4R), 35 ppm (A5R)

iR ADV 6555i II<sup>1</sup>: Approx. 3.3 seconds or less

iR ADV 6565i II<sup>1</sup>: Approx. 3.3 seconds or less

iR ADV 6575i II<sup>1</sup>: Approx. 3.1 seconds or less

Reading: 600 dpi x 600 dpi

Printing: 1,200 dpi x 1,200 dpi

Up to 9,999 copies

Automatic or Manual (9 Levels)

25% - 400% (1% Increments)

25%, 50%, 71%

141%, 200%, 400%

iR ADV 6555i PRT II<sup>1</sup>: Standard: Reader and platen cover  
iR ADV 6555i II<sup>1</sup>/6565i II<sup>1</sup>/6575i II<sup>1</sup>: Standard reader and Single-pass Duplexing Automatic Document Feeder (DADF)

Colour Network ScanGear2. For both TWAIN and WIA

Supported OS: Windows Vista/7/8.1/10/Server 2008/2008 R2/2012/2012 R2/2016

100 x 100 dpi, 150 x 150 dpi, 200 x 100 dpi, 200 x 200 dpi, 300 x 300 dpi, 200 x 400 dpi, 400 x 400 dpi, 600 x 600 dpi

Platen: Sheet, Book, 3-Dimensional Objects (Up to 2kg)

Feeder size: A4, A4R, A3, A5, A5R

Feeder weight:

1-sided scanning: 38 to 220 gsm/64 to 220 gsm (BW/CL)

2-sided scanning: 50 to 220 gsm/64 to 220 gsm (BW/CL)

Send functionality available on all models

Scan to USB Memory Key: Available on all models

Scan to Mobiles or internet-connected devices: A range of solutions is available to provide scanning to mobile devices or internet-connected devices depending on your requirements. Please contact your sales representative for further information

Scan to cloud-based services: A range of solutions is available to provide scanning to cloud-based services depending on your requirements. Please contact your sales representative for further information

TWAIN/WIA Pull scanning available on all models

# TECHNICAL SPECIFICATIONS

# imageRUNNER ADVANCE 6500 II series

## Scan Speed (BW/Colour; A4)

Single-sided Scanning (BW):  
120 ipm (300 dpi) / 120 ipm (600 dpi)  
Single-sided Scanning (Colour):  
120 ipm (300 dpi) / 60 ipm (600 dpi)  
Double-sided Scanning (BW):  
240 ipm (300 dpi) / 150 ipm (600 dpi)  
Double-sided Scanning (Colour):  
220 ipm (300dpi) / 60 ipm (600 dpi)  
300 Sheets (80 gsm)  
2-sided to 2-sided (Automatic)

## Paper Capacity Double sided scanning

## SEND SPECIFICATIONS<sup>1</sup>

### Optional / Standard Destination

Standard on all models  
E-Mail/Internet FAX (SMTP), SMB, FTP, WebDAV,  
Mail Box, Super G3 Fax (Optional), IP Fax (Optional)  
LDAP (2,000)/Local (1,600)/Speed dial (200)  
100 x 100 dpi, 150 x 150 dpi, 200 x 100 dpi,  
200 x 200 dpi, 200 x 400 dpi, 300 x 300 dpi,  
400 x 400 dpi, 600 x 600 dpi

### Communication protocol

File: FTP, SMB v3.0, WebDAV  
E-mail/I-Fax: SMTP, POP3, I-Fax (Simple, Full)

### File Format

Standard: TIFF, JPEG, PDF (Compact, Searchable,  
Apply PDF file protection by Adobe Live Cycle Rights  
Management™, Optimise for Web, PDF A/1-b, Encrypted),  
XPS (Compact, Searchable), Office Open XML  
(PowerPoint, Word), PDF/XPS (Digital Signature)  
Optional: PDF (Trace&Smooth)

## FAX SPECIFICATIONS<sup>1</sup>

### Optional / Standard

### Modem Speed

Optional on all models  
Super G3: 33.6 kbps<sup>6</sup>  
G3: 14.4 kbps

### Compression Method Resolution

MH, MR, MMR, JBIG  
400 x 400 dpi, 200 x 400 dpi, 200 x 200 dpi,  
200 x 100 dpi

### Sending/Recording Size

A5 and A5R\* to A3  
\*Sent as A4

### FAX memory

Up to 30,000 pages<sup>6</sup>

### Speed dials

Max. 200

### Group dials/destinations

Max. 199 dials

### Sequential broadcast

Max. 256 addresses

### Memory backup

Yes

## SECURITY SPECIFICATIONS

### Authentication

Standard: Universal Login Manager (Device and Function  
Level Log-in), uniFLOW Online Express Cloud based  
management software, User Authentication, Department  
ID, Authentication, Access Management System

Optional: My Print Anywhere secure print  
(Requires uniFLOW)

### Data

Standard: Trusted Platform Module (TPM), Hard Disk  
Password Lock, Hard Disk Drive Erase, Mail Box Password  
Protection, Hard Disk Drive Encryption(FIPS140-2  
Validated), Common Criteria Certification (DIN ISO 15408)

Optional: Hard Disk Drive Mirroring, Hard Disk Drive  
removal, Data Loss Prevention (Requires uniFLOW)

### Network

Standard: IP/Mac Address Filtering, IPSEC, TLS  
Encrypted Communication, SNMP V3.0, IEEE 802.1X,  
IPv6, SMTP Authentication, POP Authentication before  
SMTP

### Document

Standard: Secure Print, Adobe LiveCycle® Rights  
Management ES2.5 Integration, Encrypted PDF,  
Encrypted Secure Print, Device signature, Secure  
Watermarks

Optional: User signature, Document Scan locking

## ENVIRONMENTAL SPECIFICATIONS

### Operating Environment

Temperature: 10 to 30 °C (50 to 86 °F)  
Humidity: 20 to 80% RH (no condensation)  
220-240V(±10%), 50/60Hz (±2 Hz), 10Amp

### Power source

Maximum: Approx. 2.4 KW  
Printing: 1,397.9Wh or less  
Standby: Approx. 260 W

### Power consumption

Sleep mode: Approx. 0.9 W or less<sup>7</sup>  
Plugin Off: 0.3W

Typical Electricity Consumption (TEC) rating<sup>8</sup>:  
4.9 kWh (iR ADV 6555i II\*/6555i PRT II\*)  
6.1 kWh (iR ADV 6565i II\*)  
6.7 kWh (iR ADV 6575i II\*)

### Noise levels (BW/CL)

Sound Pressure<sup>9</sup>  
Active: 75 dB or less  
Standby: 58 dB or less  
ENERGY STAR® Qualified  
Ecomark  
Blue Angel<sup>1</sup>

### Standards

## CONSUMABLES

### Toner Cartridge/s

### Toner (Estimated Yield @ 6% Coverage)

C-EXV 36 TONER BK  
C-EXV 36 TONER BK: 56,000 pages

## HARDWARE ACCESSORIES

For full information on options available for the  
iR ADV 6500 II\* series, please refer to the specification  
tables on your local Canon web site.

## Footnotes

II\* indicates that this model has been upgraded to new system software and includes  
additional security features as standard.

<sup>[1]</sup> Not available on 6555i PRT II

<sup>[2]</sup> Some types of tracing paper cannot be used.

<sup>[3]</sup> The time until key operations can be performed on the touch panel display is 3 seconds  
or less.

<sup>[4]</sup> Including the toner bottle.

<sup>[5]</sup> PDF print only from websites.

<sup>[6]</sup> Based on ITU-T Standard Chart No. 1

<sup>[7]</sup> 0.9 watt sleep mode may not be possible in all circumstances. Certain network  
configurations and options may prevent the device from entering deep sleep mode.  
Please refer to the user guide for more information

<sup>[8]</sup> Typical Electricity Consumption (TEC) rating represents the typical electricity consumed  
by a product during 1 week, measured in kilowatt-hours (kWh). The test methodology is  
defined by Energy Star (<http://www.eu-energystar.org>).

<sup>[9]</sup> Declared noise emission in accordance with ISO 7779

## Software & Solutions



## Certifications and compatibility



Canon Inc.  
canon.com

Canon Europe  
canon-europe.com

English edition

© Canon Europa N.V., 2018

